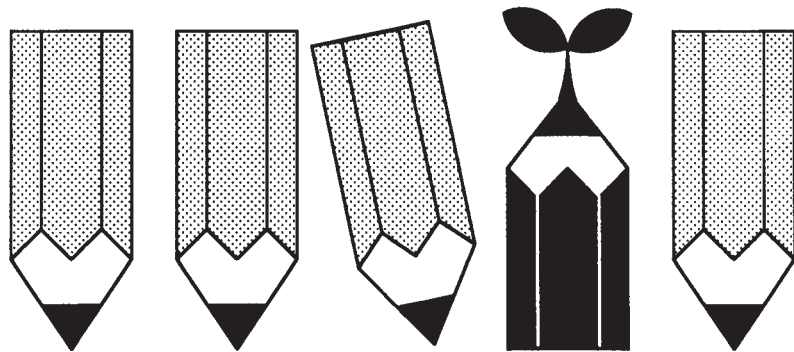


私国立中学入試

計算完成300日



解答集

氏名

【チェック1】

$$69 + 19 + 82 + 31 + 101 + 18$$

$$\begin{aligned}
 &= (69 + 31) + (19 + 101) + (82 + 18) \\
 &= 100 + 120 + 100 \\
 &= 320
 \end{aligned}$$

答え 320**【チェック2】**

$$3804 + 32404 + 1235 + 93872$$

$$\begin{array}{r}
 1211 \\
 3804 \\
 32404 \\
 1235 \\
 + 93872 \\
 \hline
 131315
 \end{array}$$

答え 131315**チャレンジ**

① $173 + 18 + 394 + 27 + 282$

$$\begin{aligned}
 &= (173 + 27) + (18 + 282) + 394 \\
 &= 200 + 300 + 394 \\
 &= 894
 \end{aligned}$$

答え 894

③ $38 + 40 + 42 + 44 + 46 + 48$

$$\begin{aligned}
 &= (38 + 42) + 40 + (44 + 46) + 48 \\
 &= 80 + 40 + 90 + 48 \\
 &= 258
 \end{aligned}$$

答え 258

② $3763 + 5489 + 7007 + 1862$

$$\begin{array}{r}
 222 \\
 3763 \\
 5489 \\
 7007 \\
 + 1862 \\
 \hline
 18121
 \end{array}$$

答え 18121

④ $37018 + 40536 + 87389 + 18402$

$$\begin{array}{r}
 2112 \\
 37018 \\
 40536 \\
 87389 \\
 + 18402 \\
 \hline
 183345
 \end{array}$$

答え 183345

【チェック1】

$$7637 - 4508 + 163 - 1009 + 998$$

$$\begin{array}{r} 7637 \\ - 4508 \\ \hline 3129 \\ + 163 \\ \hline 3292 \\ - 1009 \\ \hline 2283 \\ + 998 \\ \hline 3281 \end{array}$$

答え 3281**【チェック2】**

$$\begin{aligned} & 1001 - 742 + 839 - 258 + 159 \\ &= (1001 + 839 + 159) - (742 + 258) \\ &= 1999 - 1000 \\ &= 999 \end{aligned}$$

答え 999

$$\begin{aligned} \textcircled{1} \quad & 375 - 146 - 55 + 287 - 108 \\ &= (375 + 287) - (146 + 55 + 108) \\ &= 662 - 309 \\ &= 353 \end{aligned}$$

答え 353

$$\begin{aligned} \textcircled{2} \quad & 4003 - 57 - 1388 - 1612 - 243 \\ &= 4003 - (57 + 1388 + 1612 + 243) \\ &= 4003 - 3300 \\ &= 703 \end{aligned}$$

答え 703

$$\begin{aligned} \textcircled{3} \quad & 1001 - 374 + 778 - 906 \\ &= (1001 + 778) - (374 + 906) \\ &= 1779 - 1280 \\ &= 499 \end{aligned}$$

答え 499

$$\begin{aligned} \textcircled{4} \quad & 12345 - 4567 - 678 - 789 \\ &= 12345 - (4567 + 678 + 789) \\ &= 12345 - 6034 \\ &= 6311 \end{aligned}$$

答え 6311